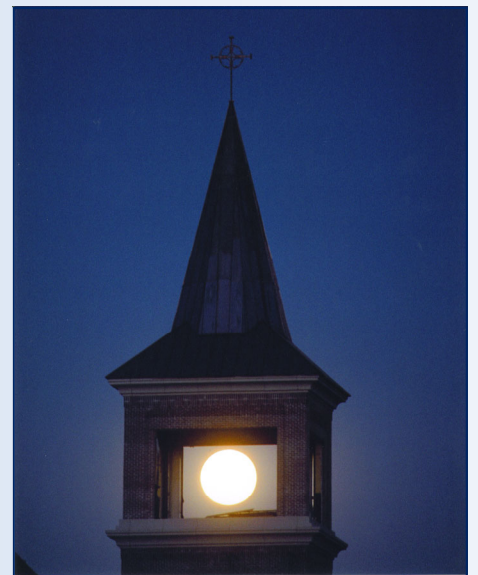


THE PARISH FAMILY OF ASSUMPTION



Celebrating the 10th Anniversary of the Dedication of our Church



March 1, 2015

Welcome

March 1, 2015

Saturday 5:00pm Liturgy February 28, 2015 *10th Anniversary of the Dedication of Assumption Church*

Prelude Music – *How Beautiful* and *Before the Sun Goes Down*

Introduction

Poem with presentation of symbols

Entrance Procession and ***Introductory Rites*** with Most Reverend Bishop Robert J. Hermann Presiding

Liturgy of the Word:

1st Reading – Genesis 22:1-2, 9a, 10-13, 15-18

Responsorial Psalm – *I Will Walk in the Presence of God.*

2nd Reading – Romans 8:31b-34

Lighting of the Consecration Candles by Knights of Columbus Honor Guard.

Choir chants, “Christ Our Light” and Congregation responds, “Thanks be to God”.

Gospel – Mark 9:2-10

Homily

Profession of Faith

Intercessions

Liturgy of the Eucharist

Incensing

Offertory – *Christ Be Our Light*

Eucharistic Prayer

Communion Song – *In This Place*

Concluding Rite,

*Remarks by Fr. Mitch Doyen,
Blessing and Dismissal*

Closing Song – *Our Mission*

*Church tours are being narrated by Fr. Andy Meiners and all are invited downstairs for a reception, chance to visit and view our Blessed Past display and celebrate a Future Full of Hope.



Founded in Hope . . .

This day - April 13, 2003 - we, the people of God at Assumption Parish in O Fallon, Missouri, commit ourselves to the Building of the body of Christ. As we pledge ourselves to the construction of our new church and parish center, we know that we are building "holy space" for the work of God among us. We commit ourselves - not only to the construction of new buildings - but to the building up the body of Christ in our midst. It is our pledge to follow humbly the way of Christ, to welcome warmly all who come here, and to reach out courageously in service that God's love might be known in our every gathering.

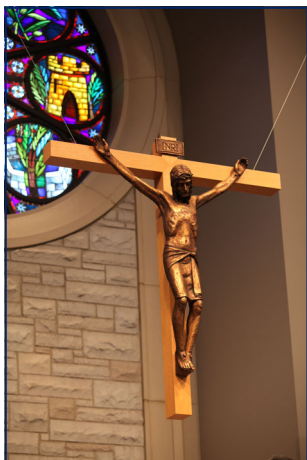
Dear beloved people of Assumption,

On this weekend of the 10th anniversary of the new church, there is so much to celebrate. With God's help, the people of Assumption have truly created something beautiful. Even more beautiful, is the love with which you fill our Church, and the love that spills forth from it into the world!

It was an honor for me to be a part that great effort with all of you. As you read this, I am wrapping up two weeks at a retreat center where I have been blessed with time for workshops and prayer. As part of my time, I have been reading through the many beautiful goodbye notes I received. You have again been gracious and kind. Certainly, I miss you. Mostly, I am profoundly grateful for the opportunity to serve the Kingdom of God side-by-side with you. And certainly, our work is not finished.

Please continue to pray for me - as I do for you - that we might recommit ourselves to the hard work of love. May we remember that it truly does matter how we treat each other; and that God is always with us. And, as I said, you can know that I will love you forever, for I will.

In Christ,
Fr. Joe



Reflections on our New Church

I opened the door of our new church today -

Not completed -
but assailing the senses-

Beholding rays of light playing across the vaulted ceiling, amid the bronzed beams that wrapped their arched and wooden arms, in blessing for all who stood below
Envisioning the refractive gleam that will soon stream through the colored artistry of windows; inspiring silent awe, in their mosaic beauty.

Breathing the hint of incense and sweet candle wax, soon permeating this sacred place, as it has for ancient ceremonies and ancient times.

Imagining the taste of consecrated bread and the blood-red liquid, served so generously and so often to all in need of heaven's nourishment. To taste - to sip is truly to savor the recurrence of the final feast of Jesus.

Touching the strong, stone pillars which stand like sentinels, guarding this sacred place while acting as metaphors for the strength of our eternal faith.

Hearing the myriad footsteps, young and old that will soon sound on the echoing tiles, and the murmured prayers of all who will seek solace, forgiveness and healing, while tolling bells will welcome all who wish to enter.

Sensing the peace surrounding me, I form a bond with this holy place and all who will join me here. We are all one; bound by our love for Jesus and one another.

Together, we have created a place that epitomizes what is good on earth!

Opening my heart, I begin to heal!
Opening my soul, I begin to sing!

For I opened the door of our church today!

We Pray

God of all goodness, it is our pledge to follow humbly the way of your Son, to welcome warmly all who come here, and to reach out courageously in service to others. Bless our efforts, O God, that your love might be known in our every gathering.

Parish Mission Statement:

May you find Christ here . . .

May you bring Christ to the world.

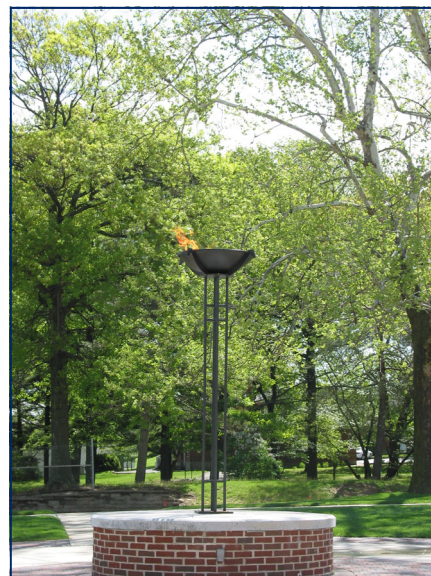
ASSUMPTION PARISH COMMITMENT

As a member of Assumption...

- ◊ I will help create an environment where all are welcome.
- ◊ I will respect the wisdom of long-time parishioners...
and welcome the gifts of the new.
- ◊ I will bring my concerns to the correct person, and in a
in a respectful way.
- ◊ I will encourage people to be their best,
but I will not expect perfection from them.
- ◊ I will participate at Sunday Mass each week, and pray regularly.
- ◊ If I hurt anyone, I will apologize.
- ◊ I will contribute my time, talent, and treasure for the good of
others.
- ◊ I will treat each person as I would treat Jesus.

Assumption's Torch

It is beautiful to see our torch burning in the courtyard. On Holy Saturday night, we gather in the darkness of sin and death, the darkness of Good Friday. The darkness, thanks be to God, would yield to the light of Resurrection! Our torch burns as a sign of the power of the light of Christ, a light which the darkness cannot dispel. During Ordinary Time, we light our torch on Sunday's, remembering that each Sunday is a little Easter; during Lent, the torch remains unlit. But during the Easter Season, we light it each day to remind us of the power of the risen Jesus in our midst.



About Our Church . . .

The Altar

The altar is the most important piece in the church. It is the focal point, the symbol of Christ, and therefore is the most noble and beautiful object.



Cornerstone

CHURCH OF THE ASSUMPTION
OF THE BLESSED VIRGIN MARY

PARISH FOUNDED: 1871
NEW CHURCH DEDICATED:
FEBRUARY 26, 2005

MAY YOU FIND CHRIST HERE...
MAY YOU BRING CHRIST TO THE WORLD

MOST REV. RAYMOND BURKE,
ARCHBISHOP OF ST. LOUIS
REV. JOSEPH G. KEMPF, PASTOR



The Ambo

The ambo is a piece of great importance in the church, for this is where the sacred scriptures are proclaimed.

The Presider's Chair

The presider's chair is designed to be a part of the sanctuary ensemble. It is the place from which the priest leads the assembly in prayer.



The Crucifix

The crucifix is suspended from the ceiling, directly over the altar.

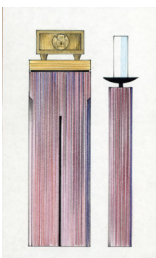
Other Statues

The statues in church were chosen to best represent the prayers of Assumption Parish and the people who worship here. The statue of St. Vincent de Paul - a patron of the St. Louis Archdiocese - was chosen especially for his love and service to the poor. The statue of St. Vincent de Paul reminds us that the Eucharist must lead us to reach out in service to the hungry and outcast as Jesus did.

On the left of the sanctuary is the Holy Family statue. Chosen to hold up the image of a family that was able to work through its struggles of life together, and to witness the power of familial love. (Or to be witness to the power of familial love.)

The statue of St. Monica is at the back of the church. She is a patron of people with long-suffering causes, especially of mothers of wayward children. Monica prayed for her wayward son for 30 years, and he one day returned to his faith. Today we know him as St. Augustine.

The statue of St. Francis of Assisi is opposite St. Monica at the back of the church. He was chosen because of his simple living of Gospel values, and his care of the earth and all of creation.

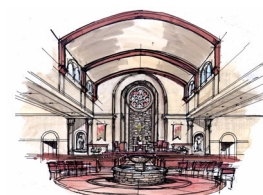


The Tabernacle

Assumption's tabernacle is between 70 and 80 years old and is the shape of a medieval reliquary. The design on the front is the pelican slashing its breast with its beak, and feeding its young with its own blood - an ancient symbol for Christ.

The Nave

This wonderful worship space is more than double the space of our old church, and along with the balcony, seats approximately 1200 people. The nave includes the choir area, the pews and the baptismal font near the main entrance to the church. The word nave is from the Latin word for ship, and the vaulting of the ceiling is reminiscent of an upturned boat.



Baptismal Font

Our beautiful baptismal font includes a small upper font made of granite. The water flows from the granite bowl into an immersion pool. The materials signify a strong relationship between the sacraments of Baptism and Eucharist. The font is placed near the entrance to the assembly, because it is in Baptism that we start our journey with Christ. Only after our initiation in Baptism do we then progress to the altar.

The Narthex

The narthex is our gathering space at the main entrance of the church building. It is a transition space from the outside world to the celebration of the liturgy.

Relics

Relics have been associated with the altar since earliest times, and they are placed under the altar rather than set into the table of the altar.

Our relics are from some of the very early martyrs: Sts. Clement of Rome, Irenaeus, and Liberatus. We also have relics of the saints whose statues we display in church: St. Monica, and St. Vincent de Paul. In addition to the above we have relics of St. Louis IX, and St Phillipine Duchesne.

Stained Glass

The magnificent Rose Window is a 15-foot circle, and each of the eight medallions is from a litany of the blessed Virgin. Briefly, they are (clockwise):

The Gate – This image, from Ezekiel, is the symbol of chastity and purity.

The Olive Branch – This symbol is one of peace, of hope, and of heaven.

The Tower of David – The Tower of David refers to Jesus' royal ancestry through Mary.

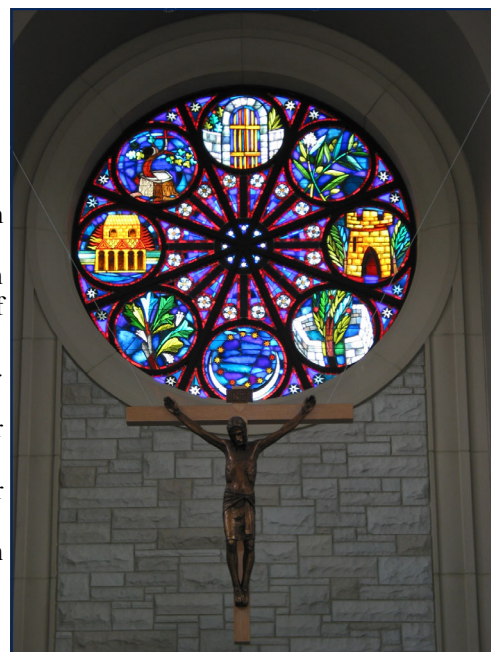
The Moon and the Stars – Christ is the great Sun of Justice. Mary is the moon which reflects the brilliant light of the sun. The crown of twelve stars refers to the Woman of the Apocalypse.

The Enclosed Garden – Mary pondered the mysteries of the Incarnation in her heart. This symbol is of her humility and contemplation.

The Hawthorne – Just as tradition accorded the blossoming of the Hawthorne in winter as the sign of God's favor, so Mary brings forth a Son through the power of God alone.

The House of God – This symbol reflects the image of Mary as a worthy vessel or dwelling place of the Savior – the means of the Incarnation.

The Root of Jesse – This is an image symbolizing the lineage of Christ. The Messiah comes forth from a fallen humanity.



Did You Know . . . Over the last ten years the following number of parishioners have received their Sacraments at Assumption.



Baptism - 1,777



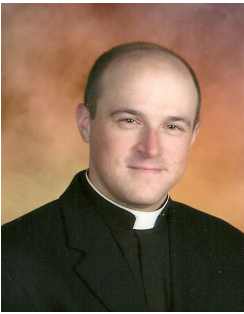
Confirmation - 1,529



Marriage - 402

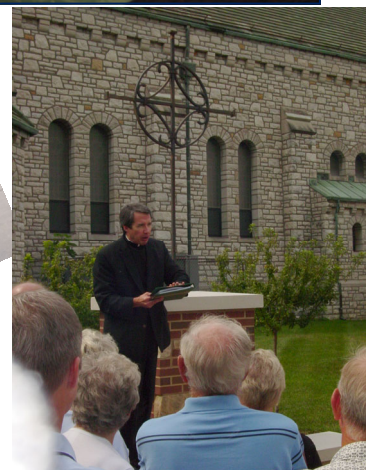


First Communion - 2,006





May you bring Christ to the world.



MAKING A LASTING DIFFERENCE PLANNED GIVING PARTNERSHIP WITH ASSUMPTION

The Planned Giving Partnership with Assumption is your commitment to include Assumption in your Will or Trust and our commitment to further the work of Jesus Christ here.

DO YOU WANT TO MAKE A LASTING DIFFERENCE?

You have a tremendous opportunity to affect the lives of future generations through your Will or Trust. You can further the very mission of Assumption Parish:

'May you find Christ here...

May you bring Christ to the world'.

Imagine impacting lives for years to come by a gift

- *For the physical and spiritual needs of all who would ever come here*
- *For the needs of those who suffer, and*
- *For our own spiritual well-being and growth*



WHAT ARE SOME BENEFITS TO YOU?

- ❖ *You leave a legacy, furthering the mission of Assumption Parish for future generations.*
- ❖ *You give an example to your children, reflecting God's generosity in a unique and beautiful way.*
- ❖ *You provide for both your immediate family and your parish family.*
- ❖ *You may potentially decrease your taxes.*

ASSUMPTION PARISH WISHES TO THANK YOU!

❖ *When naming Assumption as a beneficiary of a bank account, IRA, Insurance Policy, or in your Will or Trust, your name will be inscribed in a partnership stone in our courtyard. Call Janet Schwendemann, 636.240.3721 ext 232 to declare your intention.*

❖ *You will be invited to a special Mass and reception that honors your goodness and looks to the future.*

❖ *You and your intentions will be enrolled in our special prayer book. Our priests will pray personally for your intentions weekly.*

❖ *Tax ID: 43-068865*

Planned Giving Partnership!

In October 2014 Assumption dedicated and blessed our partnership stones, and our new commemorative plaque, which reads:

*Making a Lasting Difference
Assumption's Planned
Giving Partnership*

*Please pray for the people whose
names are inscribed here.*

*By including Assumption in their
will or trust they have left a legacy
that will further the very work of
Jesus Christ here
for future generations.*

Those who have named Assumption in their Will, Trust, or as a beneficiary of any asset receive a partnership stone. We invite you to pray for the names of those inscribed on each stone, that their generosity might make a lasting difference... furthering the work of Jesus Christ for future generations.

We celebrate those who have already made Assumption Parish a priority in their final gift; and all those who choose to leave a gift in the future! If you would like to learn more, Janet Schwendemann at 240-3721, ext. 232. The Planned Giving Courtyard is located outside the doors of the Fr Joe Kempf Parish Center.

Stewardship Our Gifts to God and Parish

We are grateful to you for your presence, your participation, and your financial support of Assumption Parish.

	Jan 24/25	Jul 1,2014 - Jan 25,2015
Envelopes (590)	\$ 26,704	\$ 917,457
Online Giving (1x month)	\$ 20,229	\$ 140,930
Loose	\$ 1,346	\$ 40,305
Total	\$ 48,279	\$ 1,098,692
		Budget, 1,074,034

It takes an average weekly collection of \$36,000 to sustain our parish mission.

"Every man according as he purposes in his heart, so let him give; not grudgingly, or of necessity, for God loves a cheerful giver. 2Cor 9:7



It is simply amazing to be a part of a "Mission" that began more than 140 years ago. Assumption School is committed to supporting our parents in their holy calling to nurture the faith of their children while providing a solid academic education. The support of this Mission has been quite evi-

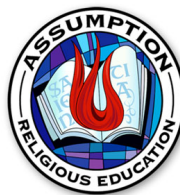
dent during the last ten years. In addition to building a beautiful church, the Assumption Parish Community was able to build a much needed addition to our school facilities. The addition included a two-story classroom wing with 10 classroom areas that include two fully equipped science labs to provide advanced science and technology education to all of our students. The new additions also included a clear, safe and secure main entrance to the school and new office space for both the Day School and PSR programs.

The new addition allowed us to expand our school to include a preschool program and add an additional kindergarten classroom that is housed in our Early Childhood Education Center. Seven classrooms were renovated with new flooring, paint and cubbies. In addition, the bathrooms were renovated to accommodate the younger children. This program was clearly needed for the Assumption Community because we are proud to say we have 128 students in our preschool and kindergarten programs.

During the last ten years, there have also been many positive changes to what goes on inside the school buildings. All of our teachers have mapped out their curriculum and have it online for everyone to see. S.T.E.M. (science, technology, engineering and math) has become an integral part of our curriculum. We have added an enrichment coordinator that has implemented many programs like robotics and chess. Our students participate in the Challenger Program, Read, Right, and Run Program, A+ Art, Character Education, Simple Solutions Math and English, and Assumption School has added a Performing Arts Curriculum. Technology is evident with Smart Boards in every classroom, computer lab and an updated School Website.

In addition to an outstanding academic program, our students learn in a faith-filled environment. Our students participate in Children's Liturgies, Prayer Services, The Rosary, The Stations of the Cross, and prepare to receive the Sacraments of Reconciliation, First Holy Communion, and Confirmation. Our students also participate in a variety of Service Projects both locally and globally.

Assumption School truly carries on the Mission of Learning... Loving... Living... Christ!



The Parish School of Religion program has certainly changed over the past ten years! Mrs Bonnie Hoeckelman retired from directing PSR after 34 years of being involved in the religious education program at Assumption. The office now includes many other components of faith formation:

PSR, Junior High Youth Group, RCIC, RCIT, Special Needs Program, Sunday School and Vacation Bible School.

Here are some interesting facts and experiences that include the past ten years:

- Currently our PSR staff represents over 200 years of teaching religion to our parish community
- 817 Students receive the Sacrament of Eucharist
- 788 Students receive the Sacrament of Confirmation
- Our PSR families raised \$5,000.00 with a Pennies from Heaven campaign. This purchased the clerestory window "Wisdom" for the new Church
- FUNraiser Vino & Van Gogh parish (and community) wide involvement that supports our program. This year it is on March 28!
- Several outreach programs including 8th graders serving at the Karen House each month in St. Louis. Karen House is a home/shelter for women and children who would have no place to live.
- 7th graders support the Alleluia Basket program in which approximately 2000 children are given Easter Baskets. These children would otherwise not have celebrated Easter with a gift.
- Upgraded computer program that allows families better access to registration and information.
- As a PSR program we have given flip-flops to the children of Belize, shoes for the Shoeman project, collected food for St. Vincent DePaul
- Each PSR student is presented their very own Bible in 5th grade
- Celebrate a Living Rosary (October) and May Crown-ing (May)
- 8th grade PSR students usher at the weekend Masses

The Religious Education offices are blessed in countless ways through the generosity of the families, holiness of catechists, and support of the entire parish community.

He professes to have knowledge of God and styles himself a child of the Lord.
Wisdom 2:13



Living Faith through Stewardship –

Growing Servant Leaders: Yearly formation days remind volunteers that: Jesus was always more about who his followers were becoming, rather than what they were doing; God does not call the qualified, but rather qualifies the called; that Jesus was patient with those around him; that Jesus was not paranoid: he was not distracted by negative self-talk and continually reminded us, “Do Not Be Afraid.” Yearly formation helps us to grow our identity and our vision; improve planning and organizational skills; improve communication skills and reliability; discover principles of non-violence, conflict resolution and humility. Our Worship and Liturgy Ministries and Administrative Ministries are shining examples of those who continually work on these skills.

How We Grow In Faith / Nourishing our Spiritual Life /

Evangelization: Mass, Private Prayer, Stations of the Cross, Small Church Communities, Bible Studies, Baptismal Preparation Classes, Days of Reflections, Parish Missions, Adult, Youth, and Grade School Retreats, Religious Education Classes, Formal Catholic Elementary, High School and College Education, Rite of Christian Initiation of Adults and Children, Catholics Returning Home, Topical Presentations, Mothers of Preschoolers Ministry, Sunday Preschool, Advent By Candlelight, 24/7 Men’s Group, Vacation Bible School, Sponsoring someone in RCIA, Baptism, Confirmation, or Marriage, Centering Prayer, and Youth Ministries.



How We Care For One Another / Evangelization: After Funeral Luncheons, Communion to the Homebound, Prayer Tree and Prayer Team Ministry, Hospital Visitation, Transportation, Nursing Home Visitation, Grief Support, Meals in Need, Home Repairs, Social Services, St. Vincent DePaul Society, Healing Companions, Marriage Sponsor Couples, PSR, RCIA, VBS, Special Needs, and Sunday Preschool Catechists, Advent Giving Tree, Annulment Advocates, Cancer Support, Nursery Workers, Mothers of Preschool Caregivers, Wedding Assistants, and School Tuition Committee.

How We Get To Know Our Community / Evangelization: Coming to Mass, Socials Committee, Fall Festival, Baptismal Preparation Host Homes, Welcoming Committee, Social Media Team, 50+ Club, Sunday Hospitality, Ice Cream Social, Giving and Attending a Retreat, Knights of Columbus, Athletic Association, Youth Group Musicals, Golf Tournament, Dinner Auction, Trivia Night, Mouse Races, and Event Coordinators.

How We Care For Our World / Evangelization:

Annual Catholic Appeal, Transitional Housing, The Growing Project, Meals for the Homeless, Fair Trade Craft Fairs and Fair Trade Coffee Campus-wide, Single-Stream Recycling, Grounds and Garden Committee, Blood Drives, Mission Trips, Crisis Collections, Homilies online, Social Media, Life, Peace, and Justice Ministries, and Prayer.



Because We Moved Forward In Faith...

Since the Building of the church in 2005, and because of the size of the church and parish center facilities, we are now able to accommodate many events that we would have otherwise not been able to support. Here are just a few...

Who could forget the Good Friday Tornadoes?! Yet, because of our facilities, not a beat was missed as we moved from the church to the parish center to continue Mass.

Anyone who has experienced a Funeral in the church can appreciate the beauty of the Narthex and the indoor space this provides for visitations prior to the service.

At Christmas, we accommodate 1,800+ people in a single space for worship, plus we live-stream! And at the same time, we fill the chapel.

Hospitality Sunday has moved from the Gym to Halls A and B. This has given us kitchen space and indoor movement from worship to fellowship.

Funeral luncheons are no longer in the KC Hall and we can move easily from funeral liturgy to burial to luncheons, as well as accommodate much larger gatherings.

Going from two small meeting rooms in the basement of the rectory to a parish center for meetings means ministries no longer have to jockey for space. And on-site retreats are now possible.

Projection in church has allowed the visual learner in all of us to thrive.

The church bells ring out for all of O’Fallon to sense our presence throughout the day.

Forward in Faith . . .

Whenever I walk around our parish, sometimes through our cemetery, sometimes all the way down to the lower field, sometimes down to Civic Park, sometimes across the street to pray with the Sisters of the Most Precious Blood, sometimes up the street to McGurk's or Rendez-vous Café, I always learn something new about our history, or something new yet on our horizon. I have witnessed the love and enthusiasm pouring out of so many hearts during the creation of our beautiful exhibition in honor of ten years in the new church; and truly to honor generations of faith lived and anticipated in this community. The stories of our ancestors have given birth to our own stories, one glimpse of God's glory after another. And as we have discovered in the telling, each beautiful, or sorrowful, story is sung in the same key, somehow revealing a deeper meaning, a more profound truth about the unique mission of Assumption Parish.

We must wonder out loud, with Elizabeth, "How is it that the Mother of our Lord has come to us?" We can feel deep in our bones that somehow despite our wandering, just like the Israelites in the desert or just like Jesus' disciples on Good Friday, our God has fashioned a people here, a community destined to reveal God's glory in a broken world. As we pause in this moment to express our pride in all we have been and the faith-filled community we have become, we also ask ourselves, each one and all of us together, "How will we say yes this time?" Mary said, "yes" to the Incarnation, then "yes" again to Jesus' life and mission, then "yes" again to her son's dying on the cross, then "yes" again to His resurrection life. And through it all, Mary said, "My soul proclaims the greatness of the Lord." We share in Mary's mission of bringing Christ to the world. As parishioners of The Assumption of the Blessed Virgin Mary, we are followers of Mary. How will our stories of faith inspire generations yet to come?

I have a couple of suggestions for us to discern as we look forward in faith. I believe we can extend the spirit of the mission of Assumption Parish far beyond the boundaries of Main Street. We already reach out to folks in need from Belize to the African Continent; we already send our youth to proclaim the Gospel all over the country. But we can deepen and sustain our efforts at meaningful evangelization which reach hearts in ever more profound ways. My first suggestion is that each one of us prayerfully

discern how best to continue or how to begin participation in a small church community. A couple of hours each week, or simply one gathering each month, can provide true nourishment for our souls. This nourishment is like a mirror of the nourishment we receive in the Eucharist; we actually encounter Christ in each other in the world. Receiving Christ through witnessing faith to each other is a beautiful and necessary complement to receiving Christ in the Eucharist. By simply telling and listening to the stories of our lives and translating them through the stories of Jesus, the disciples or the lives of the saints can be a powerful way to bring our faith alive and to bring Christ to the world. Saying "that is not my style" is not a real option; no more than saying "oxygen" is not my choice for breathing. Please prayerfully consider deepening, beginning or joining a small church community soon.

My second suggestion is that we place Mary more and more in the center of our lives. I have experienced a real grace from my own growing relationship with Mary in the last 10 years. Since our parish is named in honor of The Assumption of the Blessed Virgin Mary, I take it as a sign that my growing connection with her and my presence here are together one grace. Mary's faith is a beautiful witness for us. Let us all take time in the months and years ahead to more deeply understand Mary's mission as our own. May God bless us all in our journey together as Assumption Parish.

Fr Mitch



DAY OF REFLECTION hope

Join Fr Mitch Doyen, Fr Joe Kempf, and fellow Assumption parishioners for a Day of Reflection!

All adults in the parish are invited to attend this awesome one-day retreat, which will include reflections on hope and wonderful fellowship.

Fr. Mitch will share a personal reflection, and Fr. Joe returns to participate in this very special day!

When: 8:00am - 4 p.m. on Saturday, March 7
Where: Fr. Joe Kempf Parish Center

Lunch is provided, along with an ample helping of the Holy Spirit! Feed yourself spiritually this Lenten season with a Day of Hope – given by parishioners for parishioners.

Seating is limited. Reserve your place with us by emailing Mary Ann Schaller at maschaller1@gmail.com

There is no cost to attend. However, a reservation is required.

Readings for the Week Mar 2 - Mar 8

Mon: Dn 9:4b-10; Ps 79:8, 9, 11, 13; Lk 6:36-38

Tue: Is 1:10, 16-20; Ps 50:8-9, 16bc-17, 21, 23; Mt 23:1-12

Wed: Jer 18:18-20; Ps 31:5-6, 14-16; Mt 20:17-28

Thu: Jer 17:5-10; Ps 1:1-4, 6; Lk 16:19-31

Fri: Gn 37:3-4, 12-13a, 17b-28a; Ps 105:16-21; Mt 21:33-43, 45-46

Sat: Mi 7:14-15, 18-20; Ps 103:1-4, 9-12; Lk 15:1-3, 11-32, Ex 20:1-17 [1-3, 7-8, 12-17]; Ps 19:8-11; 1 Cor 1:22-25; Jn 2:13-25

Alternate readings (Year A): Ex 17:3-7; Ps 95:1-2, 6-9; Rom 5:1-2, 5-8; Jn 4:5-42 [5-15, 19b-26, 39a, 40-42]

From the Sisters of the Most Precious Blood

The CPPS sisters join with the parish of Assumption in this 10th Anniversary Celebration. How many ways have we sisters found Christ here in Assumption? Our daily Mass and weekends have been evidence of Christ's presence in the priests and parishioners who have shared with us that Divine Presence in them, in us, and in the Eucharistic celebration. Extending that presence, we have helped bring Christ to the world through service in Christian Life Communities, in ministry with RCIA, in teaching as substitutes in PSR, in Confirmation interviews, in prayer days with and for various groups and in our own daily encounters. We rejoice with all the parishioners in their growth in Christ as individuals and as a vibrant Body that has brought Christ to the world. May His presence continue to ripple out into the world and help bring about the Reign of God.



Next Sunday, March 8, is St. Vincent DePaul food Sunday. At this time the pantry is in need of the following items: tuna helpers, chicken helpers, powdered milk, grape jelly, pasta salads, pancake mix, syrup, canned pears, small bottles of vegetable oil, dish soap, paper towels and deodorants. Grocery store gift cards are always welcome. Thank you for your continued support.



YOUNG ADULT GROUP FIESTA NIGHT!

Food, Fun, Fellowship, and DRINKS!

Join us **Saturday, March 7th, 2015** after the 5:00 PM Mass at El Tio Pepe Mexican Restaurant for dinner and drinks!

***February 28th:** Come help celebrate the 10 year anniversary of our new church at the 5:00 P.M. Mass.

***R.S.V.P. to Fr. Mark by March 5th. ¡Muchas Gracias!**

Saturday, March 7th

6:30 P.M.

Ages: 20s-40s!

Frmark1995@gmail.com



**EL TIO PEPE
MEXICAN
RESTAURANT**

315 W Terra Ln.
O'Fallon, MO 63376

Assumption Staff 636.240.3721

Ext:

Parochial Administrator
242 Rev. Mitch Doyen

Bookkeeper
234 Mary Knapp

Associate Pastor
325 Rev. Mark Whitman

Director of Youth Ministry
222 Cathy Pescarino

Associate Pastor
238 Rev. Andrew Meiners,
C.Ss.R.

Parish School of Religion
636.240.1020

Dir of Religious Education
Derlene Hirtz ext 241

Deacons

Jerry Hurlbert
Fred Volansky
Bill Walbridge

Secretary
Krista Kenkel ext 328

Child Safety Coordinator
Lorraine Niemann
314.837.3757 x224

Ext

Dir of Lay Pastoral Ministry
226 Sarah Beams

Sunday Pre School
Denise Hoehne 314.954.0092

Lay Pastoral Associate
240 Amanda Suchara

Parish Council
Dennis Maher
abvmparishcoun-
cil@gmail.com

Director of Administration
225 Jim Hager

Advancement Office
232 Janet Schwendemann
235 Rose Tubbs

Christ Renews His Parish
Jim & Shelly Schneider
636.379.2538

Parish Secretary
221 Christine Reinhart

www.assumptionbvm.org

Mass Intentions

Sunday, March 1

8:00am Carmela Bamert
10:00am Mae Rose Prize
12:00pm People of the Parish

Thursday, March 5

6:30am Doris Groneck
8:00am Barb Ronchetto

Monday, March 2

6:30am Mae Rose Ohlms
8:00am Donna Fluhr

Friday, March 6

6:30am Vocations
8:00am Thomas Angus

Tuesday, March 3

6:30am Hugo Nanney
8:00am Jack Sammelman
7:00pm Ralph Menne

Saturday, March 7

9:00am Obermann &
Spletzer Families
5:00pm Geraldine
Wibbenmeyer

Wednesday, March 4

6:30am Congregational Staff
8:00am Viola Flint

Sunday, March 8

8:00am Albert
Mennemeier
10:00am Geronimo Biagtan
12:00pm People of the
Parish



We pray for the repose of the soul of:

Vergil Kuhn
Father of Greg Kuhn

John McMillen
Father of Tim McMinnen

*May God welcome them home,
fill them with peace, and bless those
who will miss them.*

Around Town

Assumption (O Fallon) Quilts of Valor, Mar 9, Parish
Center, 8am-3pm. Bring a sandwich.

CELEBRATION OF THE MASS

Weekend Masses

Saturday 9:00am
(Motherhouse Chapel)

Vigil 5:00pm

Sunday 8:00am

10:00am

12:00pm

Daily Mass

Weekdays 6:30am
(Motherhouse Chapel)

8:00am

RECONCILIATION

Saturday 4:00-4:45pm

BAPTISM

2nd and 4th Sundays of each month at
1:15pm. Required Preparation Class.
Call 240.3721 to register.

CHRISTIAN MARRIAGE

Those preparing for marriage should contact
the rectory at least one year in advance.
One party must be a registered member of
Assumption and living an active, practicing
Catholic life. Contact Janet at the Parish
Office.

RITE of CHRISTIAN INITIATION of ADULTS

(RCIA) Process through which adults are
initiated into the Catholic Church by Bap-
tism or Profession of Faith. For information
Missy Lowrey 314.630.3983.

PARISH SCHOOL OF RELIGION

Religious instruction in the Catholic faith.
Call Derlene Hirtz, 636.240.1020 for infor-
mation or to register.

CATHOLICS RETURNING HOME

For inactive Catholics returning to Church.
For more information call Steve King,
699.9961 or Dee King 734.3437.

MINISTRY OF CONSOLATION

For one-on-one grief support, contact Kris
Bohn at 379.8567, and for information re-
garding our grief support series, which is
held twice per year, contact Lynn Crews at
294.0821.

OFFICE INFORMATION

403 N Main Street
O'Fallon MO 63366
636.240.3721 Parish Office
636.240.3722 Fax
Office Hours - Weekdays 8:30am-4:00pm

ASSUMPTION SCHOOL

Principal: Genny Callier
636.240.4474

BULLETIN NOTICES

Submit to Parish Office
by Tuesday 9:00am

WEBSITE

www.assumptionbvm.org



[facebook.com/
assumptionparish](https://www.facebook.com/assumptionparish)



[@assumptionmedia](https://twitter.com/assumptionmedia)

CHURCH NAME AND ADDRESS

Assumption Church #083750
403 N. Main Street
O'Fallon, MO 63366

TELEPHONE

636 240-3721 EXT 221

CONTACT PERSON

Christine Reinhart

SOFTWARE

MSPublisher 2007
Adobe X
Windows XP

PRINTER

Toshiba e-Studio 4555

TRANSMISSION TIME

Wednesday 4:00

SUNDAY DATE OF PUBLICATION

March 1, 2015

NUMBER OF PAGES SENT

1 THROUGH 11

SPECIAL INSTRUCTIONS

Please send **2,050 copies of the bulletin!**

This issue has four more pages than usual
and we have requested 500 more copies.

Thanks!!